



Loc Performance

Today's largest, most powerful tractors demand tougher track. As the pioneer, Trackman® has continued to deliver game-changing innovations resulting in the most rugged track available. Take on today's toughest challenges and harsh environments with Trackman®.

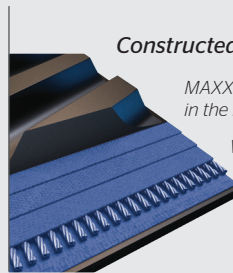
Trackman®
for CLAAS®
Combines



Constructed for Longer Life

MAXXTUFF™ steel belting reinforcement is the strongest in the market today.

Wire-ply construction with 50% more wires per inch than our competition.



HP Plus

Double the wire dramatically improves track strength

Stronger carcass reduces internal track temperatures and improves tread lug performance and wear life.

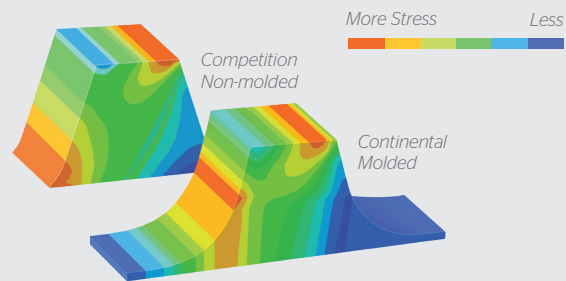


Trackman



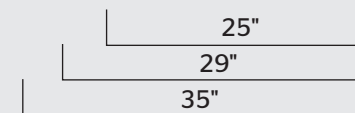
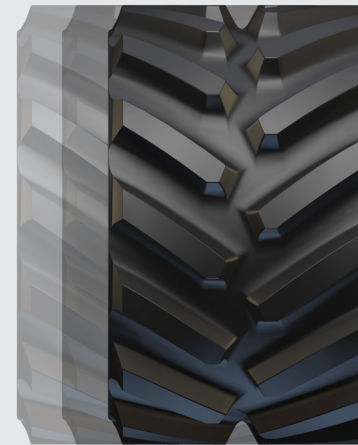
TRACKMAN® RUBBER TRACK SPECIFICATIONS FOR CLAAS®

Product Code	Vehicle	SAP #	Description	Width (in.)	Length (in.)	# of Tread Lugs	Tread Pitch (in.)	Tread Lug Height (in.)	# of Guide Lugs	MAXXTUFF™ Layers	Carcass Thickness (in.)	Ship Weight (lb.)	Shipping Dimensions (in.)
CLAAS LEXION Combines													
616190	CLAAS LEXION Combine	20926583	Trackman HP Plus	25	264	88	6	2.5	44	3	1.25	970	30x120x31
616210	CLAAS LEXION Combine	20926584	Trackman HP Plus	29	264	88	6	2.5	44	3	1.25	1080	30x120x35
616220	CLAAS LEXION Combine	20926585	Trackman HP Plus	35	264	88	6	2.5	44	3	1.25	1260	30x120x41



Fully Molded Is Stronger

- Fully molded track equals tougher, longer-lasting track.
- Non-fully-molded has built-in weak points that can lead to early deterioration and failure.
- On top of longer life, you get a more consistent rubber thickness, which leads to greater stability and a smoother ride.



Just like our track, our warranty is second to none.

In accordance with the Loc Performance Trackman Rubber Track warranty, the track is covered against material and/or workmanship defects. For complete warranty information, contact your Rubber Track dealer or visit our website at www.locperformance.com.

